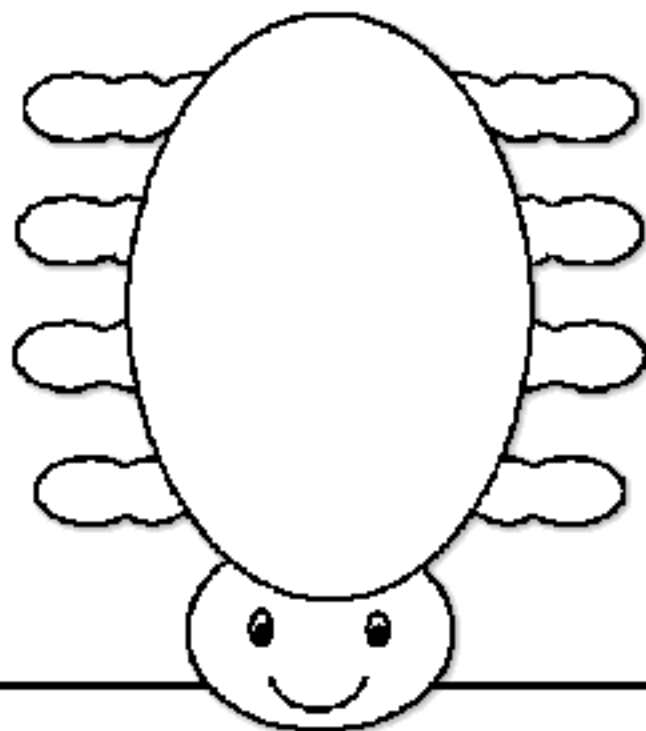
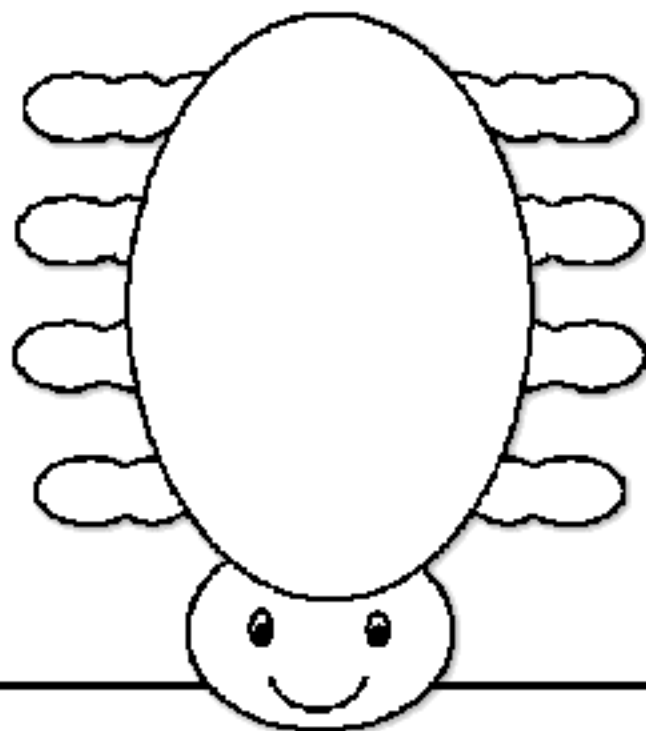
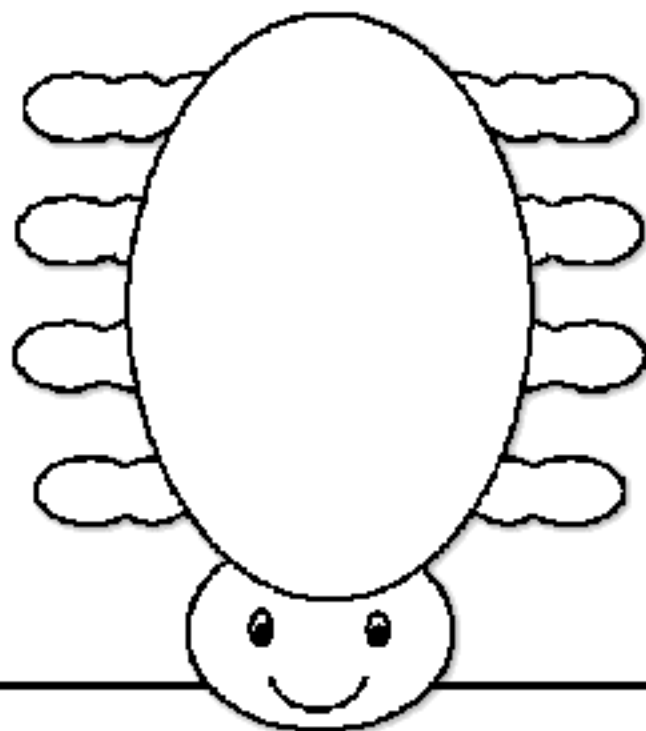


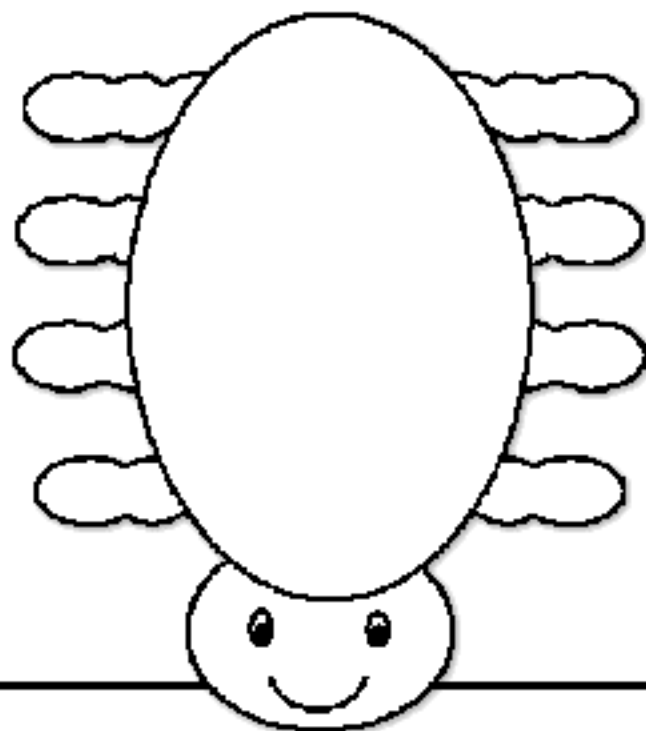
Handwriting practice lines consisting of four sets of horizontal lines. Each set includes a solid blue top line, a dashed red middle line, and a solid blue bottom line.





Writing practice lines consisting of four sets of horizontal lines. Each set includes a solid blue top line, a dashed red middle line, and a solid blue bottom line.





Handwriting practice lines consisting of multiple rows of blue solid lines and red dashed lines.